

Morgans

PROPERTY

54 Beath View, Dunfermline, KY11 4UE

Fixed Price £95,000







Excellent starter home or would suit a growing family. Upgrading required. Quietly positioned within popular residential estate with easy access to local schooling and all amenities. This three bed mid terraced villa has a private rear garden with gate access to pathway and ample residents parking to front. The property briefly comprises entrance hall, lounge and dining kitchen. On the upper level three bedrooms with good storage and access to attic. The property is double glazed with electric heating. Early entry available.



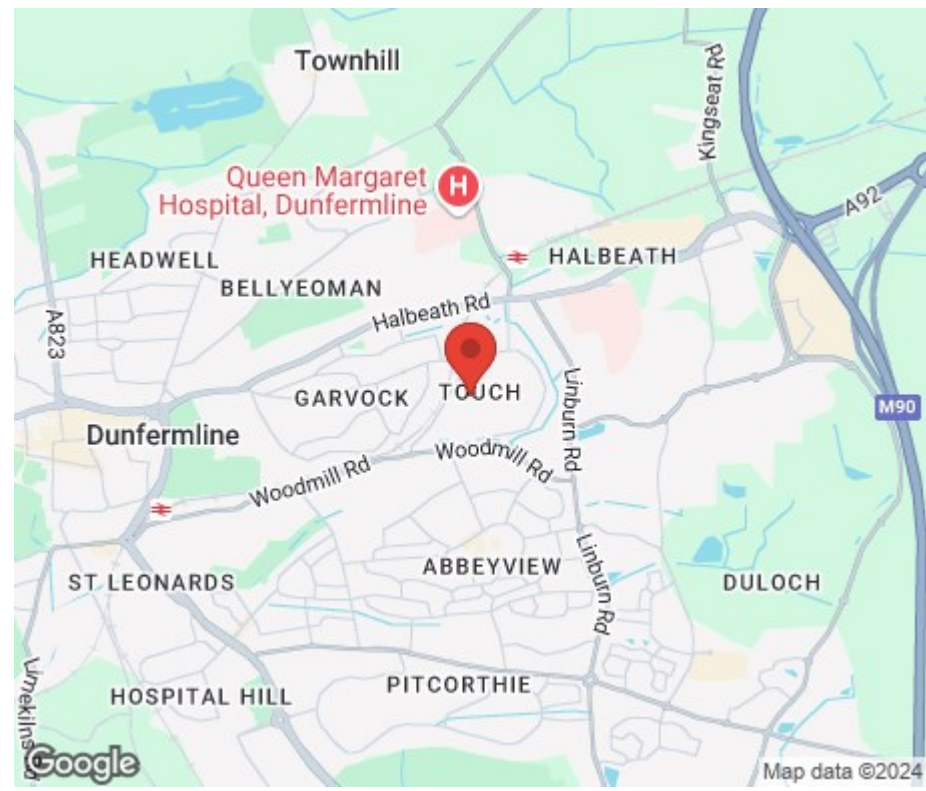


LOCATION

The ancient capital of Dunfermline won its bid to have official city status in May 2022, as part of the civic honour's competition to celebrate the Queen's platinum jubilee. The City of Dunfermline is of considerable historic interest and is the resting place of King Robert the Bruce. Carnegie's Birthplace museum, the Abbey and Abbot House reflect the historic interest of the city, whilst recent developments have seen Dunfermline move into the modern era with Carnegie Museum and Library. Dunfermline is located approximately five miles from the Forth bridges and is therefore particularly popular with commuters to Edinburgh and many parts of the central belt with easy access to the M90 motorway with its direct links to Edinburgh, Perth and Dundee and across the Kincardine Bridge by way of motorways to Stirling, Glasgow and the West. It benefits from a full range of shops, social and leisure facilities and educational establishments. The local railway stations provide a regular service to Edinburgh with intercity links to other parts of the UK. There are regular and convenient bus services both local and national.

AGENTS NOTE

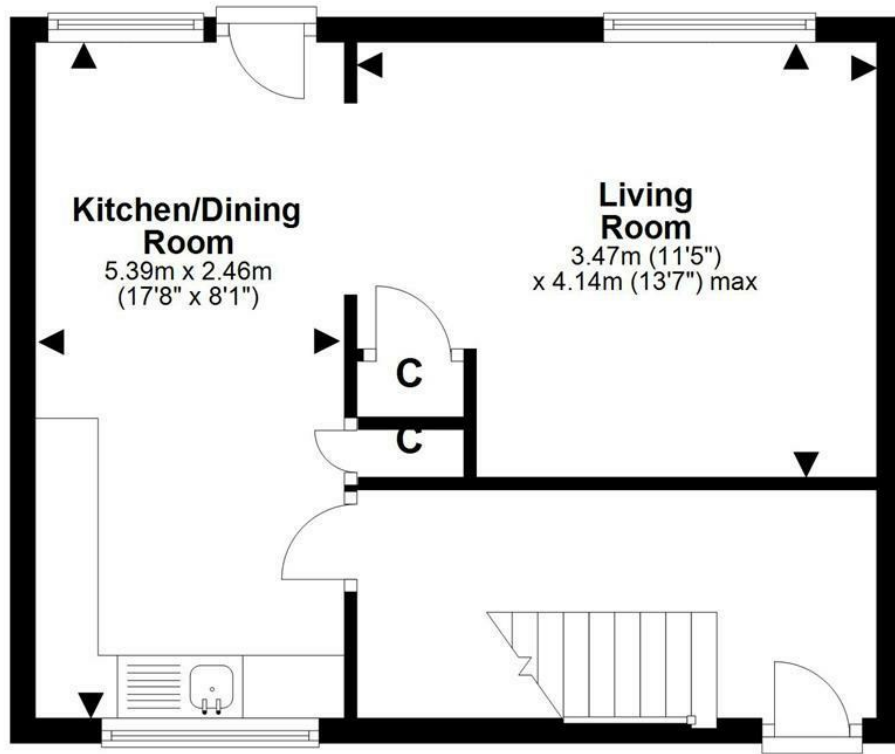
From 1st February 2022, residential properties in Scotland are required by law to have installed a system of inter-linked smoke alarms, carbon monoxide detectors and heat detectors (the "inter-linked system"). No warranty is given that any interlinked system has been installed in this property and interested parties should make their own enquiries. This property is being sold as seen in its present condition and no warranty will be given to any purchaser with regard to the existence or condition of the services or any heating or other system within the property. Any intending purchaser will require to accept the position as it exists.



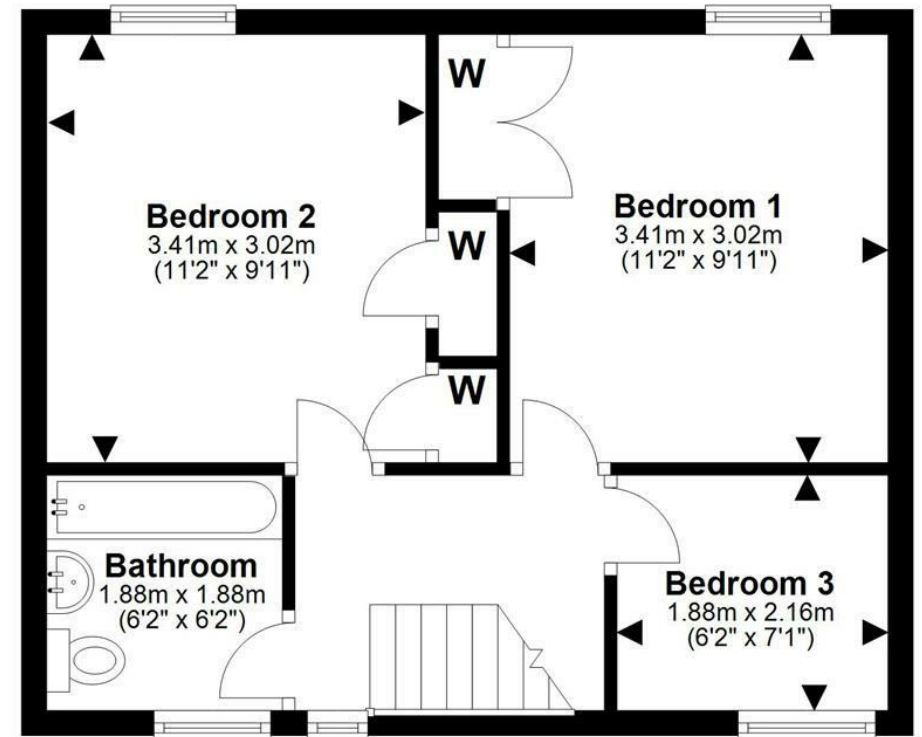








Ground Floor



First Floor

For details of the total internal floor area, please refer to the property's Home Report. This plan is for illustrative purposes only and should be used as such by a prospective buyer. PlanUp 2024
Plan produced using PlanUp.



SOLICITORS | PROPERTY

33 East Port, Dunfermline, Fife, KY12 7JE

Tel: 01383 620222 Fax: 01383 621213

www.morganlaw.co.uk



espc

rightmove

Zoopla.co.uk

onTheMarket.com

s1homes.com

naei | propertymark

PROTECTED

AGENTS NOTE These particulars do not form part of any contract and the statements or plans contained herein are not warranted nor to scale. Approximate measurements have been taken by electronic device at the widest point. Services and appliances have not been tested for efficiency or safety and no warranty is given as to their compliance with any Regulations. No movable items will be included in the sale.